

# BI/Data Governance Community Meeting

April 9, 2019

## Why are we here?

### Agenda:

- Success Story - CECE
- Survey/Interview Results
- Data Cookbook
- Data Governance Policies
- Making Data Governance Roles Official

 THE UNIVERSITY OF UTAH


# Success Story: CECE

## CECE Mission

**Continuing Education &  
Community Engagement**

provides unique pathways to and through higher education and inspires a love of learning through innovative, educational experiences for all ages and people.

James Elder - CECE Presentation  
(About 5 minutes)

 THE UNIVERSITY OF UTAH

## CECE Vision

Every learner is able to engage with CECE in their educational journey when they

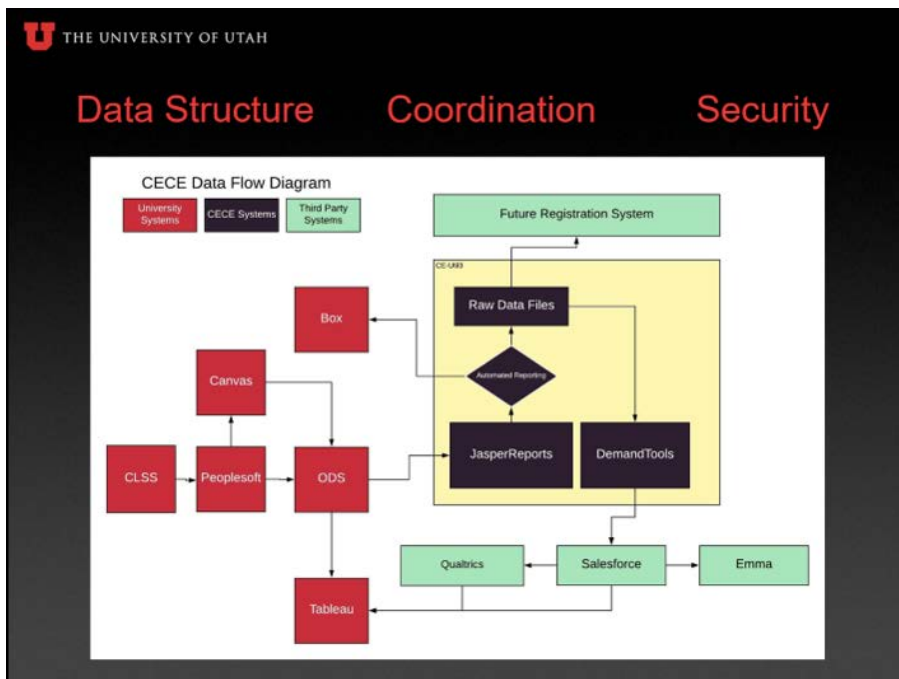
**prepare for college,  
attain their degree,  
achieve workforce success,  
or enrich their lives.**

James Elder - CECE Presentation

THE UNIVERSITY OF UTAH

# CECE Information Systems & Technology Priorities

- Students Are Our Customers
  - Information Security
  - Data Integrity
  - System Availability
- CECE Teams
  - Data Available When Needed
  - Efficient Processes that support Our Customers

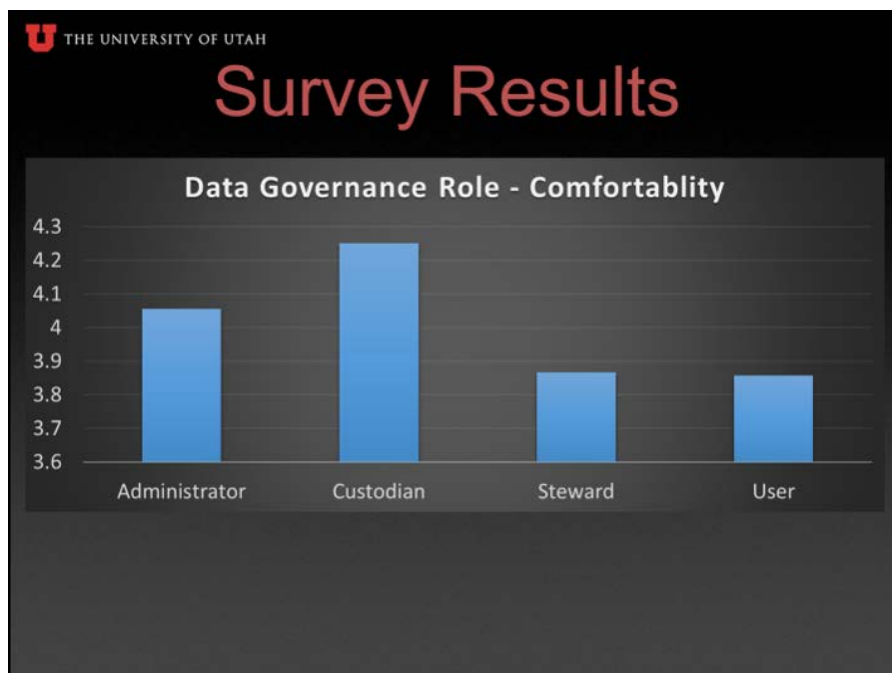


## Slide Notes



Met with 16 different departments/areas and 30 different individuals.

Goal for these meetings to see data governance successes, pain points, and expectations.



Sent out surveys to 16 different departments and received responses from 20 individuals.

Average score for comfort around their data governance was for the most part near 4 (out of 5).

The lower score for data stewards came from an interesting dynamic. Those who were new to the role had an average score of 3. Those who have been in the role for a while had a score of 5.

The data users had consistent scores of either 3 or 4. In interviews and the survey, their main concern was requesting data correctly (process and person).

## Slide Notes

Survey cont. (20 individuals)

Ideas/focus for these areas

Data Governance Training:

- 1) Data Cookbook - Definition Standards/ Integration/ Communication
- 2) Data Security - Requirements around data
- 3) Newsletter - Transparency - DG updates, department business rules, and examples

Integrate w/DW:

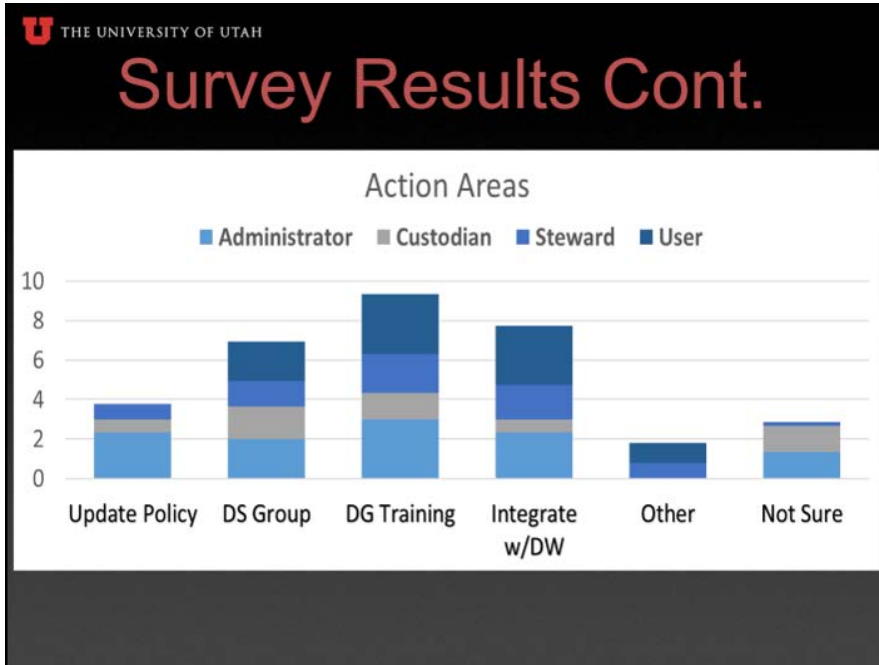
- 1) Applying DG principles in data integration
- 2) One source for university information (replace shadow systems)

Working Groups:

- 1) Definitions crosses (come to consensus or note differences)

Update Policy:

- 1) Formalized Edits
- 2) Add guidelines
- 3) Update Policy (Section III)



Themes and Examples:

Data Lineage - First Generation Students (Mult. departments collect)

Standard Definition - FTE (Is this student or HR?)

Update Policy - Formalize processes

Centralized Request for Data Sharing

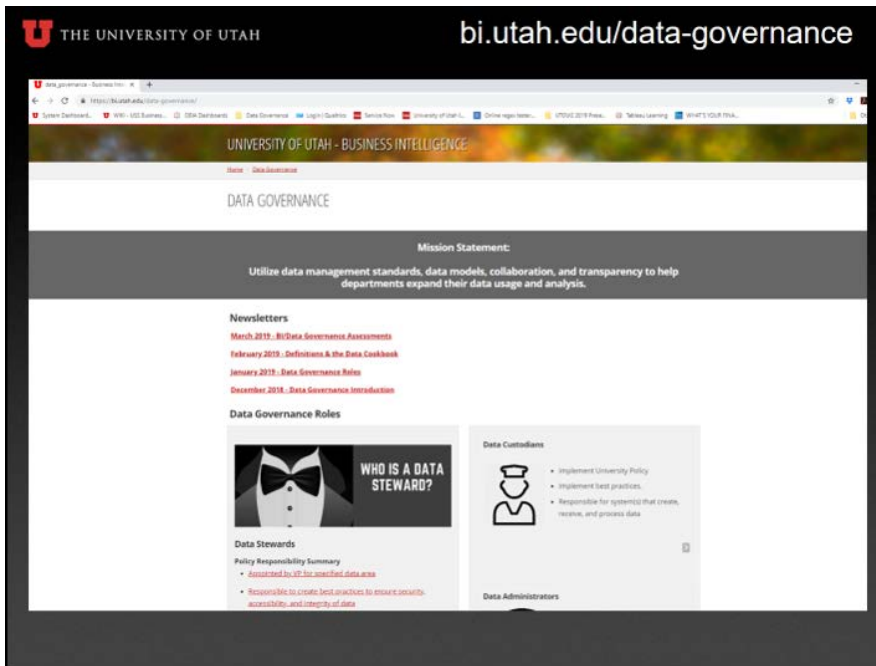
Requests - A place that can submit a request and it goes to the right people. Or at the least a place that specifies who should be informed when requesting data  
 DG Role Dialog - Working groups: When a functional area makes changes - having a better idea of who should be informed about those changes

Formalized and Automate Processes - IRIS example - crosses multiple departments and will be asked for yearly. Want to make sure everyone is contacted that should be contacted but would like an easier process once the process has been setup.

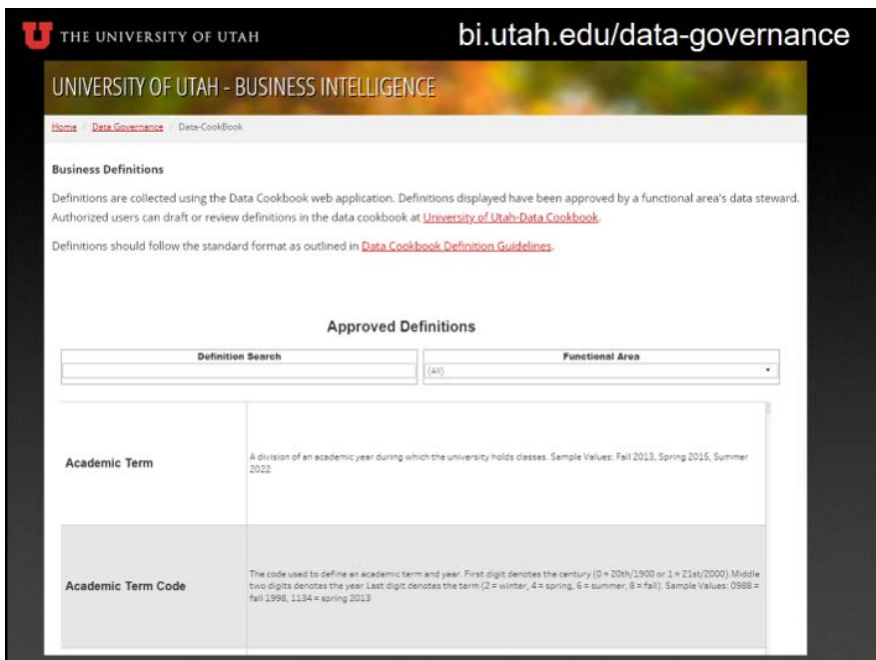
DG Training - Data cookbook, policy updates, and other upcoming initiatives

Security Guidelines - Less shadow systems

# Slide Notes

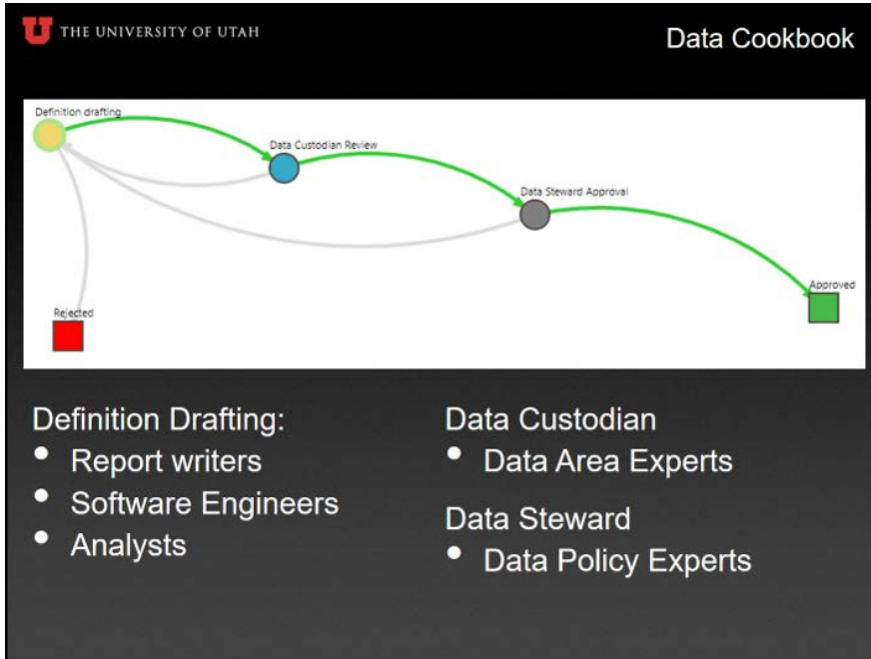


Data Governance website will give updates on what we are trying to do as well as hold archived newsletters and powerpoints.



Soon to be added to the website. The definitions approved in the data cookbook so that individuals that don't have authorization to the University's definition application can still see what has been agreed upon.

# Slide Notes



The formalized process for definition approval will help definitions to:

- 1) Define terms
- 2) State data handling
- 3) Classify sensitivity
- 4) Integrated with reports

**THE UNIVERSITY OF UTAH** **Starting to Integrate Definitions**

### Database Tables – SQL Developer

DEFINITION_NAME	VERSION_STATUS	CLASSIFICATION	PUBLIC_DEFINITION	DATA_HANDLING
1 Test Ethnicity IPEDS Asian Code	Data Steward Approval	Restricted Data	A person having origins in any ...	This information is prot...
2 Test Ethnicity IPEDS Nonresident Alien Code	Data Custodian Review	Restricted Data	A person who is not a citizen o...	This information is prot...

### Tableau Reports

Ethnicity Report | Report Definitions

Ethnicity Groups

Students of Color	Foreign
-------------------	---------


Definitions (Data Cookbook)

Source Field	Definition Type	Definition Name	Value	
IPEDS_ETHNICITY	Field	Test Ethnicity IPEDS Code	Null	Public Definition: Federal defini multi-ethnic, Asian, African-Am
value	Test Ethnicity IPEDS Asian Code	A	Public Definition: A person hasi Asia, or the Indian Subcontinent, Malaysia, Pakistan, the Philipp	

Have been currently working on integrating definitions with the Operational Data Stores (ODS) as well as tableau reports.

The goal is to make adding a definition tab easy and updates automated.

## Slide Notes

 THE UNIVERSITY OF UTAH      Update Policy

1) Editorial Changes:

Update to match institutional changes

- Information Technology Council (ITC) > Strategic Information Technology Committee (SITC)
- Vice President for Student Affairs > Vice President for Enrollment Management


2) Formal Changes:

Updates to Section I. Statement of Purpose or II. Definitions

- Data Governance Roles
  - Data Custodian (Data Area Experts)
  - Data Administrator (Technical/Systems Experts)

The BI/DG Community group will be updated on any policy changes that we are wanting to implement.

Editorial changes to match organizational changes will be submitted soon.

 THE UNIVERSITY OF UTAH      Update Policy Cont.

3) Additional Guidelines – Expand Upon Policy

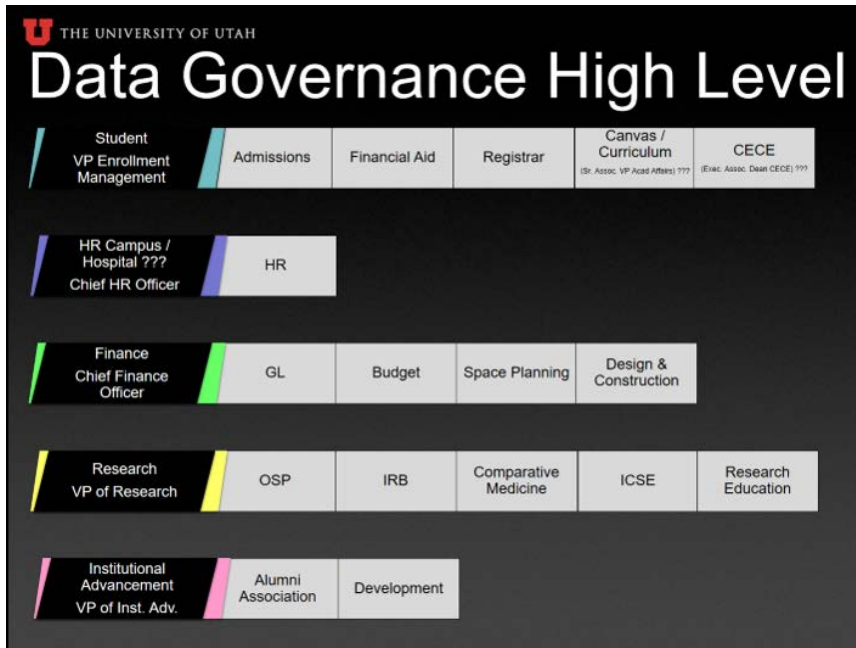
- Formalized List of Data Governance Roles

4) Update Policy/Rules

- Policy 4-004C Add financial aid (FAFSA) section



## Slide Notes



This only looks at a high level data governance role view. I didn't include custodians on purpose since the data stewards for each of these areas is pretty unclear.

The goal behind this is to see if any areas are missing that should have a data steward. Some areas mentioned as missing where: Faculty and Student Finances. If we can show the VPs who people are going to and ask to formally recognize data stewards it should help data users better understand who they should communicate with as well as help me identify who should have the final approval on definitions added to the data cookbook.